

Hydraulic

HEMA PUMPS



Transmission Oil Pumps

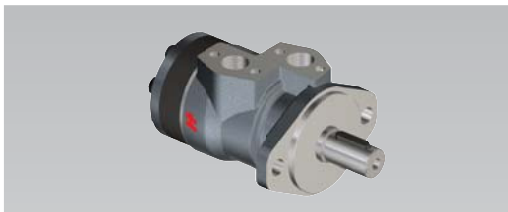
- Power-shift transmission pumps with spur gear or gerotor design.
- Min-Max speed 600-3000 RPM, 5 to 30 bar



Engine Oil Pumps

- Engine oil pumps with spur gear and gerotor types.
- Design, manufacturing and validation test capability up to 400 HP diesel engines

HEMA MOTORS



Aluminum Body Motors

Series	Displacement (cm ³ /rev)	Max. Pressure (bar)	Max. Speed (RPM)
1MN	6.1 cc - 26 cc	250	4000

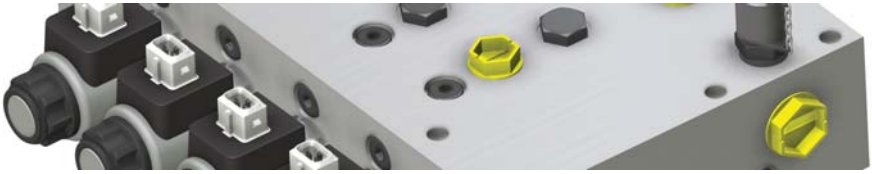
Cast Iron Body Motors

Series	Displacement (cm ³ /rev)	Max. Pressure (bar)	Max. Speed (RPM)
1600	12.38 - 41.30	170	3000
1900	22.0 - 74.2	210	3000
2200	53.6 - 110.8	210	3000

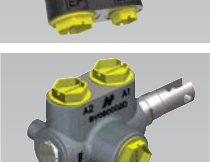
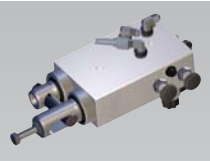
Orbital Motors

Series		CMP Gerotor	CMR Geroller
Displacement (cm³/rev)		51.7 ... 401.9	51.7 ... 401.9
Max. Speed (RPM)	Continuous	900 ... 160	775 ... 160
	Intermittent	1050 ... 195	940 ... 200
Max. Torque (Nm)	Continuous	78 ... 334	95 ... 380
	Intermittent	105 ... 429	120 ... 470
	Peak	130 ... 537	135 ... 540
Max. Pressure (bar)	Continuous	125 ... 70	140 ... 70
	Intermittent	165 ... 90	175 ... 90
	Peak	200 ... 110	200 ... 110

Please consult Hema Endustri A.S. for different options

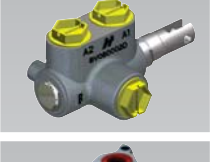


HEMA TRANSMISSION VALVES



Model	Description	Features	
DV016	Four wheel drive & differential lock valve (DT/DL valve)	Adjusted outlet pressure	17 bar
		1. On/off solenoid	Differential lock
		2. On/off Solenoid	Four wheel drive
DV018	Four wheel drive & differential lock valve (DT/DL valve)	Adjusted outlet pressure	19 bar
		1. On/off solenoid	Differential lock
		2. On/off solenoid	Four wheel drive
DV019	Transmission control valve	Adjusted outlet pressure	14-15 bar
		1. On/off solenoid	Differential lock
		2. On/off solenoid	Four wheel drive
		3. On/off solenoid	Power take off
DV103	Transmission control valve	Adjusted outlet pressure	18-20 bar
		1. On/off solenoid	Four wheel drive
		2. On/off solenoid	Differential lock
		3. Proportional solenoid	Forward
		4. Proportional solenoid	Reverse
		5. Proportional solenoid	Power take off
		6. Proportional solenoid	Second speed
		7. On/off solenoid	Hand brake
ODV200	Clutch control valve	Min. working flow rate	13 LPM
		Max. working flow rate	40 LPM
		Adjusted outlet pressure	18 bar
KMV201	PTO control valve	Min. working flow rate	13 LPM
		Max. working flow rate	40 LPM
		Adjusted outlet pressure	18 bar

HEMA AUXILIARY VALVES



Model	Description	Features	
OV100	Priority valve with load sense	Nominal flow rate	80 LPM
		Max. inlet pressure	250 bar
		Controlled pressure difference	6 bar
BV080	Baler gate valve	Max. Flow rate	75 LPM
		Max. Operating pressure	207 var
UV07	Line mounted unloader valve	Nominal flow rate	135 LPM
SSV09	Diverter Valve	Nominal flow rate	200 LPM
		Diverting type	1 -> 1 of 2
DSV06	Diverter Valve	Nominal flow rate	68 LPM
		Diverting type	2 -> 2 of 4
DSV059	Diverter Valve	Nominal flow rate	200 LPM
		Diverting type	2 -> 2 of 4
DSV11	Diverter Valve	Nominal flow rate	200 LPM
		Diverting type	2 -> 2 of 4



HEMA LIFT CONTROL VALVES



Model	Hydraulic System	Max Working Pressure (bar)	Max Rated Flow (LPM)	Relief Valve Pressure (bar)	Surge Relief	Rate of Drop Valve
KV350	Open Circuit	200	35	-	-	-
KV400	Open Circuit	200	45	-	-	-
KV450	Open Circuit	200	70	-	230 ±5	✓
KV500	Open Circuit	200	75	-	-	-
KV500-Manifold	Closed Circuit	200	75	195 ±5	235 ±5	✓
KV600	Closed Circuit	200	80	195 ±5	240 ±5	✓

Electro-Hydraulic Hitch Control System

Electro-hydraulic lift control valve is designed to control the three point hitch system on tractors. The system consist of lift hitch control valve with proportional solenoids, electronic control unit, control panel (with switch and lever options), Load and position sensors.



Features	
Single acting cylinder, open or closed center hydraulic system	
Technical Data	
Max. permissible pressure	A: 220 bar, R: 5 bar.
Max. rated flow	100 LPM
Leakage	1 cc/min @180 bar with 23cSt oil
Port connections	M22x1.5 internal thread
Hydraulic fluid	Mineral oil to DIN/ISO
Operating temperature	- 30...100°C
Recommended viscosity	20.....100cSt
Electrical connection	AMP828657-3
Protection factor	IP67
Operation type	Proportional solenoid 12V, 2.4A